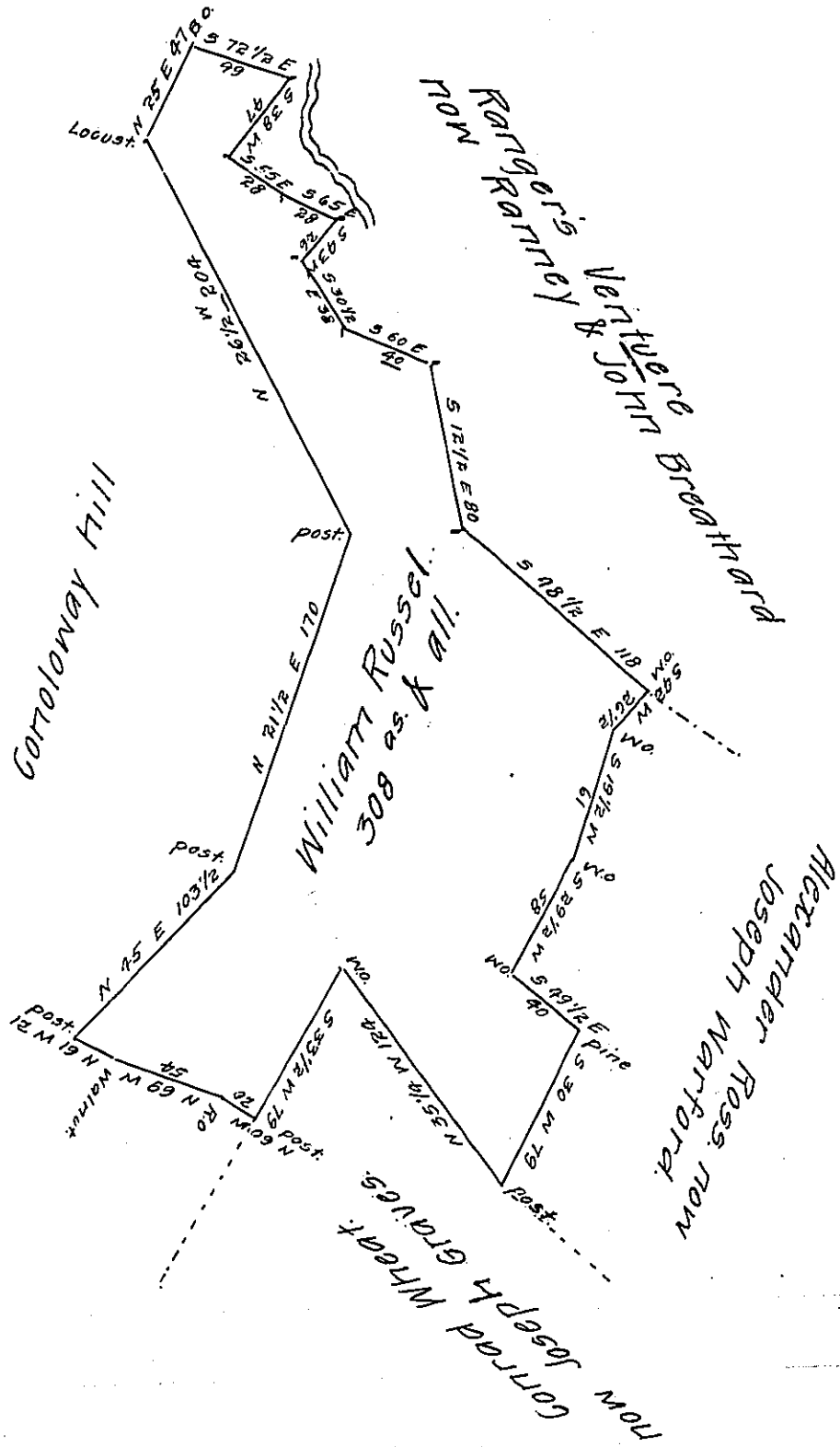


FORM NO 1.



A draft of a tract of land situate between Big and Little Cortoloway Creeks in Bethel township Bedford County. Contain-
 ing three hundred and eight acres, and allowance of six
 per cent for roads &c. Surveyed for William Russell the
 — day of — on order No. 1776 dated the 1st day
 of November 1766.

James O'Connor. D.S.

To Gabriel Heister Esqr. S.G.

IN TESTIMONY that the above is a copy of the original remaining on file in
 the Department of Internal Affairs of Pennsylvania, made
 conformably to an Act of Assembly approved the 16th day of
 February, 1833, I have hereunto set my Hand and caused
 the Seal of said Department to be affixed at Harrisburg,
 this seventeenth day of July 1903.

Henry Howard
 Secretary of Internal Affairs.